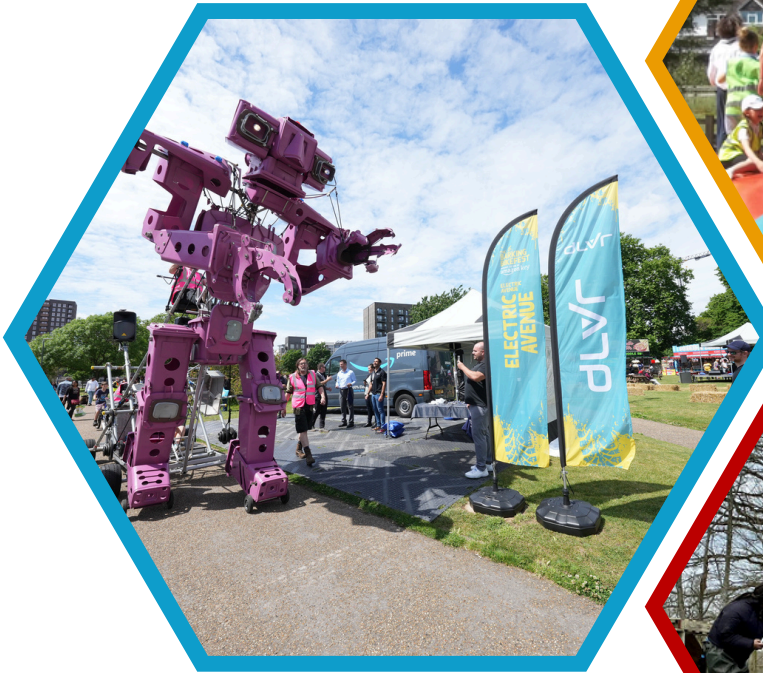


Aspire2 2022/24



Annual Report

Sept 22 - Feb 24



Table Of Content

Message from the Chair

Vision And Mission

Aspire2 Finance Report

Projects and Activities supported by Aspire2

Aspire2 Partnerships and Funders

Message from the Chair



Welcome to our first annual report as a Charitable Incorporated Organisation (CIO). We gained this status on 1st September 2022, and this is a report of the first 18 months.

For the whole of these 18 months, we have been without a manager following the resignation of our previous manager in October 22. I would consequently like offer my enormous gratitude to the trustees who stepped up and managed the charity in this period. I feel it would be churlish not to express particular thanks to Jacky Steele who took over the reins when I was in hospital and for masterminding the poetry competition and creating the completion reports for Youth Music and the Early Charity. I also offer sincere thanks to Frances Lancaster for stepping up during this period and ensuring that the minibuses ran smoothly, the yr5 university visit went ahead and for caretaking our single central register.

Lastly, I would like to offer special thanks to David - the burden of his work as Treasurer is always great and the work involved in changing to a CIO was tortuous at times as was the setting up of all that was associated with employing our own people.

We continued to receive grants during this and consequently wish to thank the Earley Charity, Wellington college, the Arts Council, Youth Music, Berkshire Community Foundation and Reading Borough Council and The University of Reading,

Thank you to all who have supported Aspire2's work for the young people of Whitley.

Yours sincerely,
Charlie Clare.
Chair Aspire2.



Vision And Mission

Vision

To work with children and families in disadvantaged areas of Reading, to develop their capacity and skills in such a way that, they are better able to identify and help meet their own needs and participate more fully in society. A key aim is to involve the community in our work and to empower families to aspire to improved futures for themselves and their children.

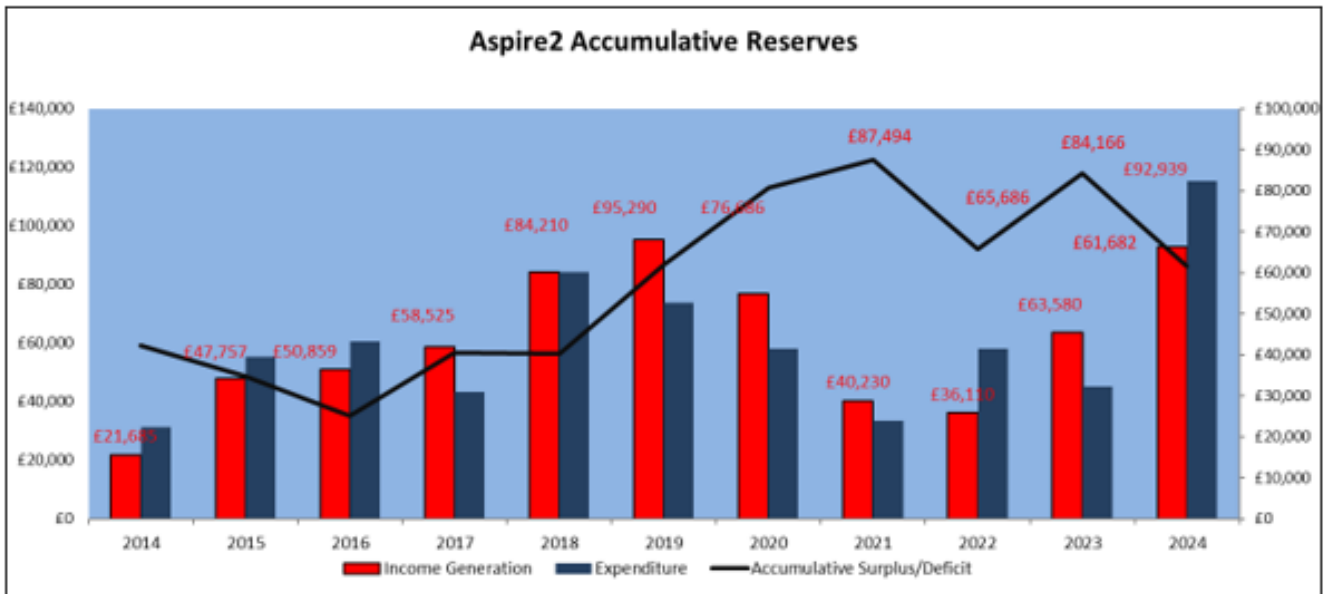
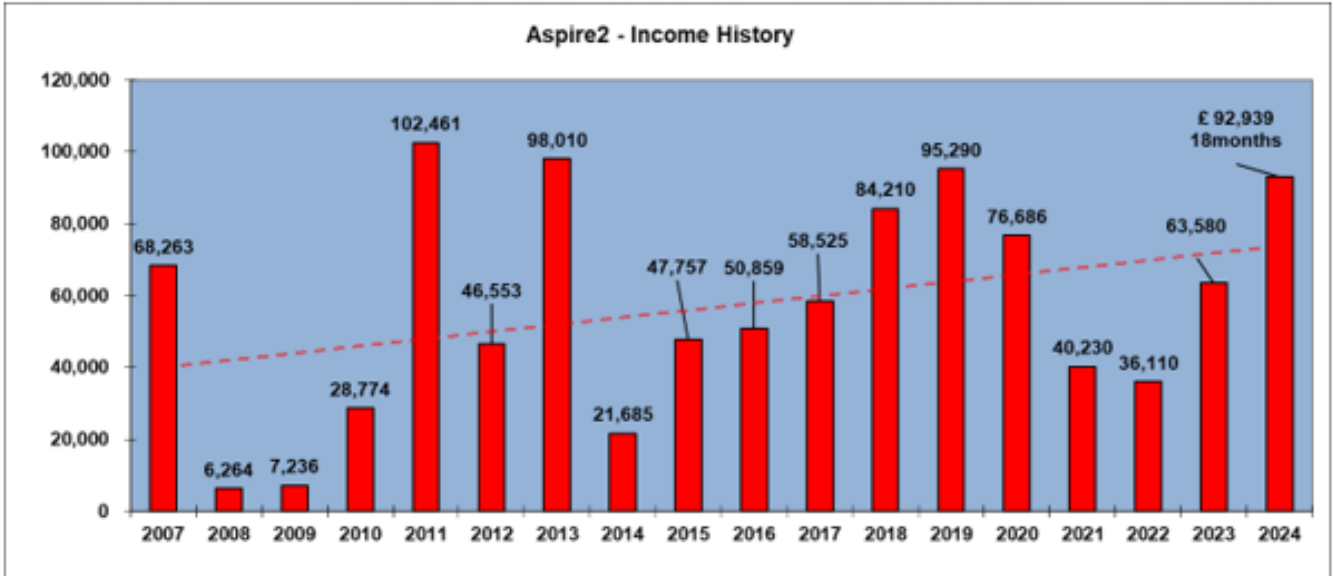
- Through activities that develop skills and aspirations, we aim to develop:
- Increased social mobility
- Better self-awareness and resilience
- Improved self-esteem
- Ability to make informed decisions

Mission

Aspire2 aims for all children in all areas of Reading have an equal opportunity to access enrichment activities, that develop skills that are essential to successful, happy, fulfilled lives.

The charity was established through the efforts of headteachers, governors, and the community of South Reading schools that form the 'Whitley Excellence Cluster' (WEC), to support the Whitley Excellence Cluster and provide a programme of enrichment activities to WEC school children and their families that they would not otherwise be able to experience.

Financial Statements



The Charity's status changed to a Charitable Incorporated Organisation (CIO) on the 1.9.22 so our financial results and tables detailed here are for the 18 months 1.9.22 to 29.2.24 as per the Charity Commission.

We started the year with an opening surplus reserve of £84,165 during the period we received income of £92,939 and expensed £115,423 and as such an adverse deficit of (£22,484), therefore we finish with a closing reserve of £61,682

Projects & Activities supported by Aspire2



MINIBUSES



Our minibuses have proven to be extremely popular, thanks to our partnership with the John Sykes Foundation, the minibuses are available for all Whitley schools to book throughout the year, to use for school trips, events and activities that will open up new opportunities to pupils.

Both vehicles have been booked out most days during term time – we are grateful to The Ridgeway Primary School and their caretaker for the help and support in hosting and maintaining the minibuses.

YEAR 5 - UNIVERSITY VISIT



We continued to hold our annual Year 5 University Day – hosting all of Year 5 pupils from our primary schools. They enjoyed a lecture from an academic in one of the university's impressive lecture theatres. The children then embarked on a tour of the university campus with their teachers, and had the opportunity to ask current students questions about university life.

POETRY COMPETITION



We held our annual school's poetry competition, again hosted by the University of Reading. The standard as usual was extremely high, with significant contributions written and performed by pupils from Nursery right up to Year 10. We are grateful to the Whitley schools for holding their own internal competitions to make our shortlist, and to all the children who wrote and performed with confidence and poise.

PUBLIC SPEAKING COMPETITION



We continued to hold our Public Speaking Competition with entries from each age group from KS1 onwards with pupils having the opportunity to deliver speeches on topics about which they are passionate on one of the major University's lecture stages – with their parents and carers as an audience. The 2023 topic was 'How I would Save the World.'

Projects & Activities supported by Aspire2



BEALE PARK



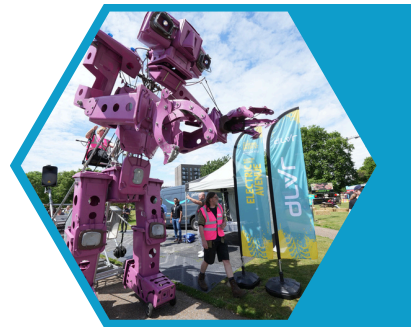
Our partnership with Beale Park continues to flourish. Over the last 18 months we have facilitated every child in Year 2 across Whitley experiencing a day out seeing the animals, countryside and (most importantly for some!) the train at Beale Park. With their entry provided at no cost by Beale Park and the Aspire2 minibuses available for transport, this was a trip that schools were able to provide completely free of charge to their Year 2 pupils. Our aim is to provide another Beale Park trip in 2025.

EARLY YEARS MUSIC - MINI BEATS PROJECT



Our Early Years Music project, which began in September '21 has been running in all our early years settings since. This has proved to be an extremely successful. We are now looking for further funding so that we can continue to fund our Mini Beats project through 2025. We have continued to support the nursery schools with sessions from Berkshire Music Trust and Kindermusic.

WHITLEY CARNIVAL



The inaugural Whitley Carnival took place on Saturday 11th June 2023 bringing together over 3500 people to walk through the streets of Whitley to celebrate the past, present and future of this diverse and complex suburban community.

In the run up to the carnival event this project successfully galvanised over 35 local arts and community organisations, working together for first time on this scale to engage the widest range of people across Whitley through a massive programme of costume, arts, music, dance and music workshops in schools and community spaces.

Local people between the ages of 1 & 100 participated in Whitley carnival coming together to create this unique and participatory carnival. It truly was a transformative and memorable place making event.

Producer Helen Bligh manager at the time at Aspire2, engaged experienced local outdoor arts producer Danielle Corbishley to oversee the design of the project, event management and artistic curation. Together with support from Project Manager Sarah Stuffins, they coordinated with schools and community groups and a dynamic team of local freelancers to deliver a highly successful event.



Aspire2 Partners & Funders



THE EARLEY CHARITY

We remain extremely grateful to the ongoing financial support of the Earley Charity and the grants they award, which are instrumental in helping us to delivery enrichment activities for children in Whitley. Their continued involvement is much appreciated.



THE NATIONAL FOUNDATION - YOUTH MUSIC

Aspire2 is delighted to be a funded partner of Youth Music, supported by the Arts Council and the National Lottery. Their funding is key to our Early Years Music project, and has enabled us to launch this 2-year project across all nursery settings and in the community. Embedding music at an early age will deliver long term benefits in many areas of learning for all children in Whitley.



READING VOLUNTARY ASSOCIATION

RVA Have offered Aspire2 advice and support in many aspects of running the charity, and their help is very much appreciated.

JOHN SKYES FOUNDATION

Aspire2's partnership with the John Sykes Foundation really has opened up the wider world for Whitley children. Their generous funding towards our minibus leases has enabled us to commit to providing transport for all Whitley schools for a total of five years. We have already seen a huge demand for the minibuses, meaning children can go on trips and adventures that otherwise would be financially unachievable. This project has already made a fundamental difference to Whitley children and we are very grateful for the freedom it offers them.



BERKSHIRE COMMUNITY FOUNDATION

Funding from the Berkshire Community Foundation has contributed towards our Early Years Music project and has enabled us to grow this project to support more children.

We are looking forward to building on our relationship with BCF in future years.



BERKSHIRE
COMMUNITY
FOUNDATION

Aspire2 Partners & Funders

READING BOROUGH COUNCIL

Over the last year Aspire2 has built relationships with several different departments in the council, and has benefited from council funding towards project and core costs. We are continuing to strengthen and build on this relationship and are grateful for the ongoing support we receive from across the council.



LEIGHTON PARK SCHOOL

We have developed a relationship with Leighton Park, and very much appreciate their support in offering sporting, cultural and artistic opportunities to pupils in our Whitley schools.



WDCA

We have worked with the Whitley Community Development Association to deliver 2 projects -The Whitley Carnival and the Early years Music Project. By working in and with the community, rather than delivering to or for them, we are able to ensure that our projects are well received and deliver strong impact for our beneficiaries. We look forward to more family orientated fun in the near future.



WELLINGTON COLLEGE

We were delighted to have a gained support in this period from Wellington College and we look forward to building on this relationship



WELLINGTON
COLLEGE



Contact Us



manager@aspire2whitley.com



www.aspire2whitley.com

If you have any queries or would like to be involved with Aspire2 please contact us on the details above.